

Allsup Disability Study: Income at Risk

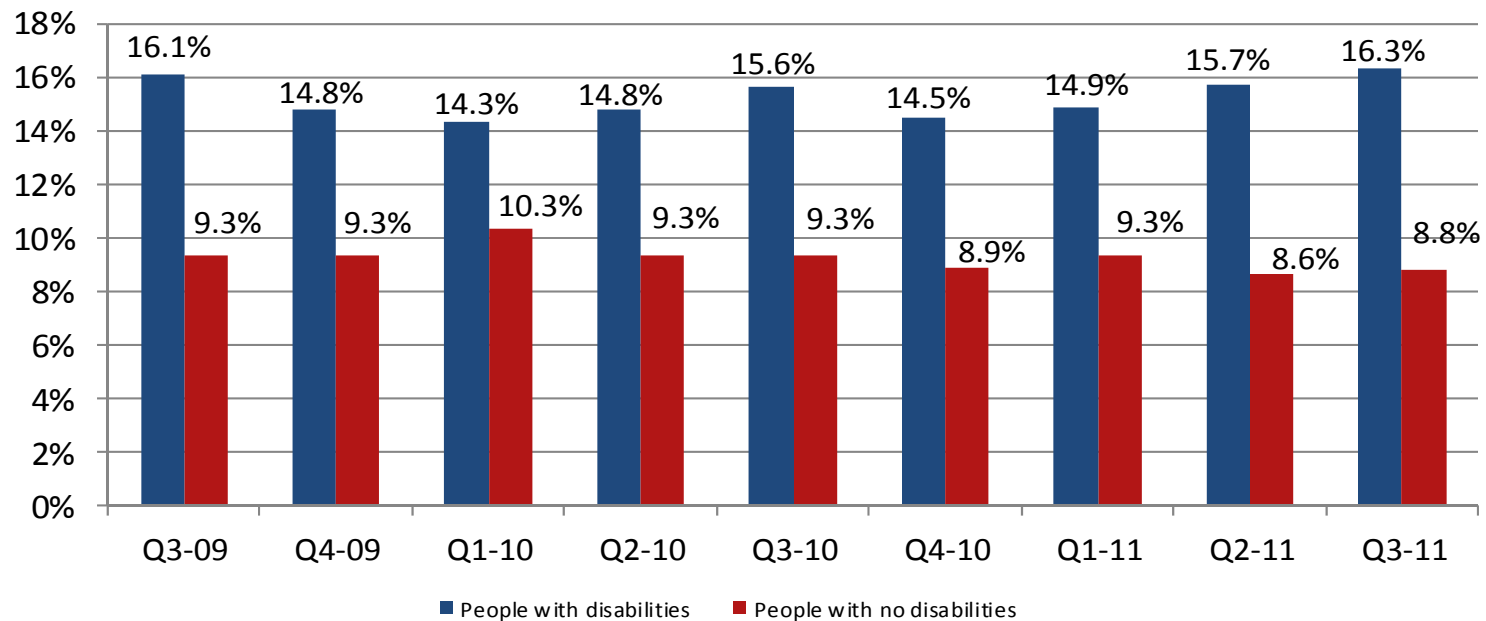
Examining income risk factors
for people with disabilities

2011 Third Quarter Review
October 2011

Allsup Disability Study: Income at Risk

The unemployment rate for people with disabilities climbed again for the fourth consecutive quarter and continues to be significantly higher than for those with no disabilities.

Quarterly unemployment rates



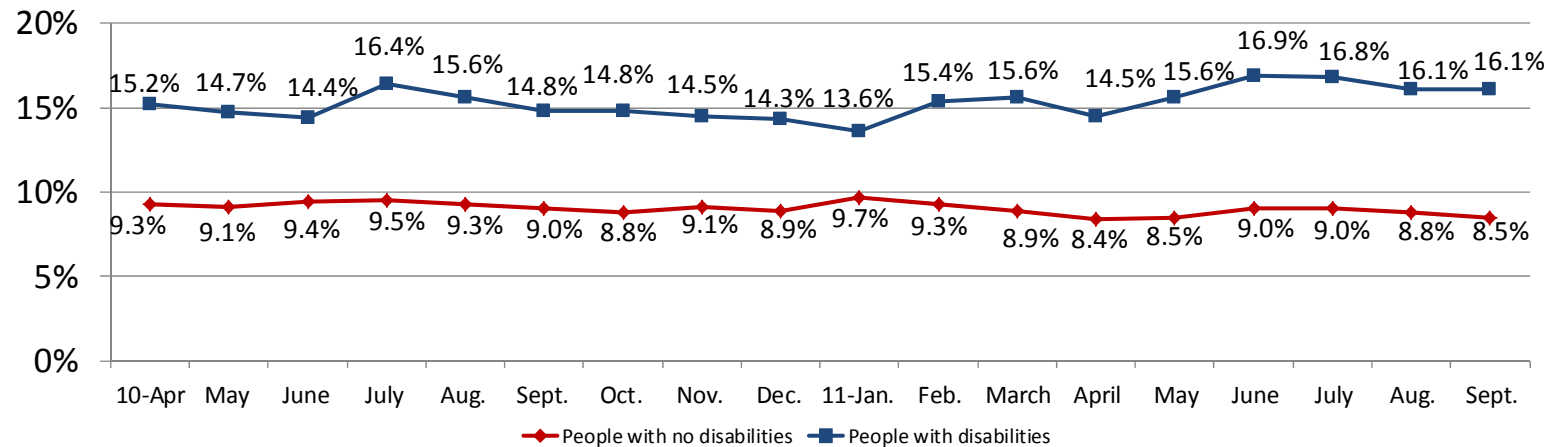
During the third quarter of 2011, the unemployment rate for people with disabilities exceeded 16 percent for the first time in two years. The quarterly rate hasn't been this high – 16.3 percent – since reporting of the disability unemployment rate began in the fourth quarter of 2008. For the third quarter of 2011, people with disabilities experienced an unemployment rate more than 85 percent higher than the rate for people with no disabilities.

Source: Allsup analysis based on U.S. Bureau of Labor Statistics data; not seasonally adjusted and includes those 16 and older.

Allsup Disability Study: Income at Risk

The unemployment rate for people with disabilities has topped 16 percent for the past four months.

18-month unemployment rates



For the fourth consecutive month, the unemployment rate for people with disabilities topped 16 percent in September 2011. Since the U.S. Bureau of Labor Statistics began tracking unemployment rates for people with disabilities in 2008, the rate has only exceeded 16 percent in eight of 36 months, including the preceding four months of 2011. Previous months where the unemployment rate for people with disabilities topped 16 percent were July 2010 and August, September and October 2009.

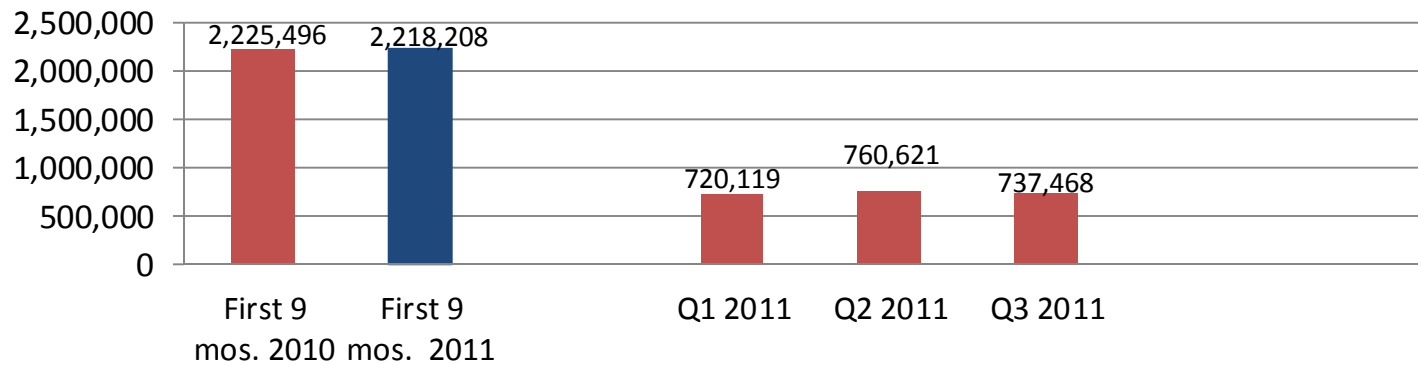
People with disabilities continue to have nearly double the unemployment rate of people with no disabilities. People with disabilities consistently have a higher unemployment rate and greater volatility in joblessness than those without disabilities.

Source: Allsup analysis based on U.S. Bureau of Labor Statistics data; not seasonally adjusted and includes those 16 and older.

Allsup Disability Study: Income at Risk

Social Security Disability Insurance applications for third quarter 2011 decreased 3 percent compared to the previous quarter.

SSDI applications



For the third quarter of 2011, Social Security Disability Insurance applications dropped 3 percent compared to the second quarter of 2011. Year-to-date, the number of people applying for SSDI benefits remained steady (down just 0.33 percent) for the first three quarters of 2011 compared to the first three quarters of 2010.

Source: Allsup analysis based on Social Security Administration data.

Allsup Disability Study: Income at Risk

Background information

About Allsup:

Allsup is a nationwide provider of Social Security disability, Medicare and Medicare Secondary Payer compliance services for individuals, employers and insurance carriers. Founded in 1984, Allsup employs nearly 800 professionals who deliver specialized services supporting people with disabilities and seniors so they may lead lives that are as financially secure and as healthy as possible. The company is based in Belleville, Ill., near St. Louis. For more information, visit www.Allsup.com.

Allsup Disability Study:

Allsup has been conducting the quarterly "Allsup Disability Study: Income at Risk" since 2009.

Third quarter 2011 report: <http://www.allsup.com/Portals/4/allsup-study-income-at-risk-q3-11.pdf>

Archive: <http://www.allsup.com/about-us/news-room/income-at-risk-report-archive.aspx>

Source materials:

U.S. Bureau of Labor Statistics, http://www.bls.gov/schedule/archives/empsit_nr.htm#2011

Social Security Administration, <http://www.ssa.gov/OACT/STATS/dibStat.html>

Allsup contacts:

Rebecca Ray, (800) 854-1418 ext. 65065, r.ray@allsupinc.com

Mary Jung, (773) 429-0940, mtjung@msn.com