

Allsup Disability Study: Income at Risk

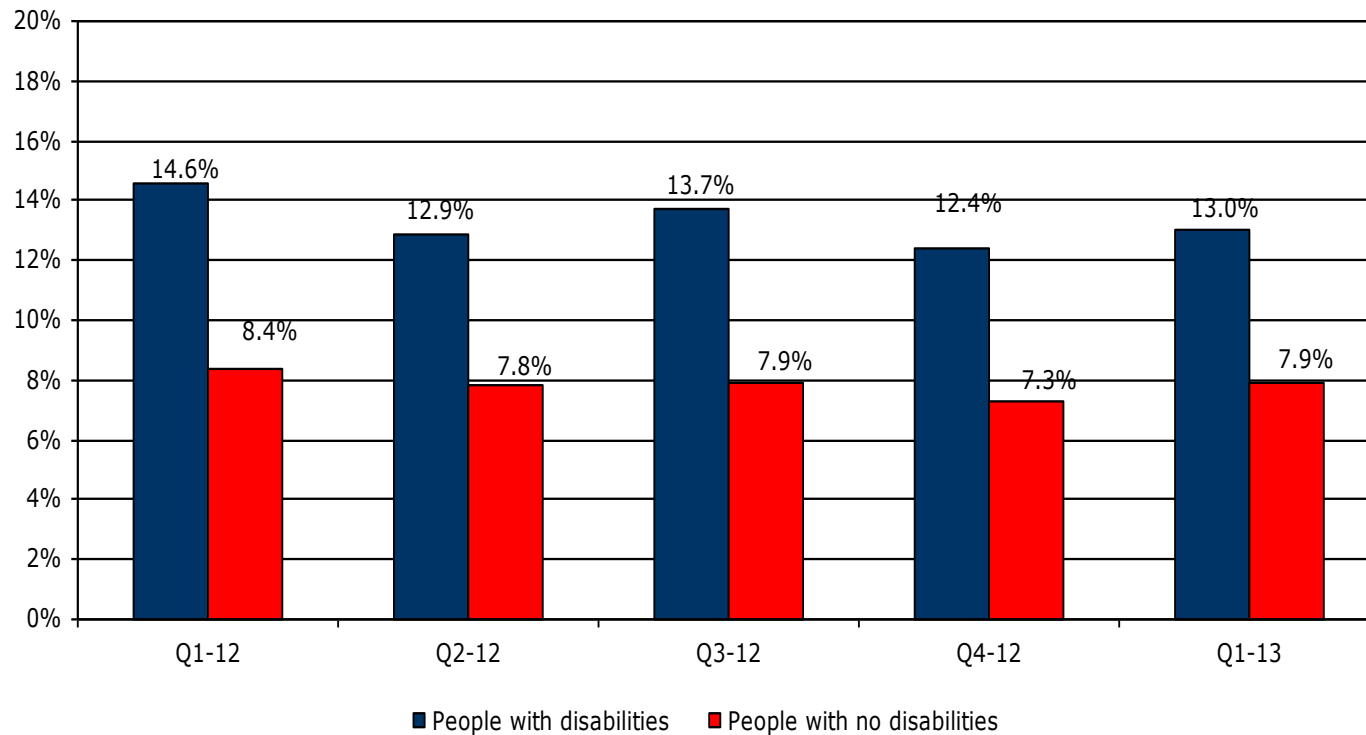
Examining income risk factors
for people with disabilities

2013 First Quarter Report
April 2013

Allsup Disability Study: Income at Risk

The quarterly unemployment rate for people with disabilities continues to be significantly higher than for those with no disabilities, despite a decline from a year ago.

Quarterly unemployment rates



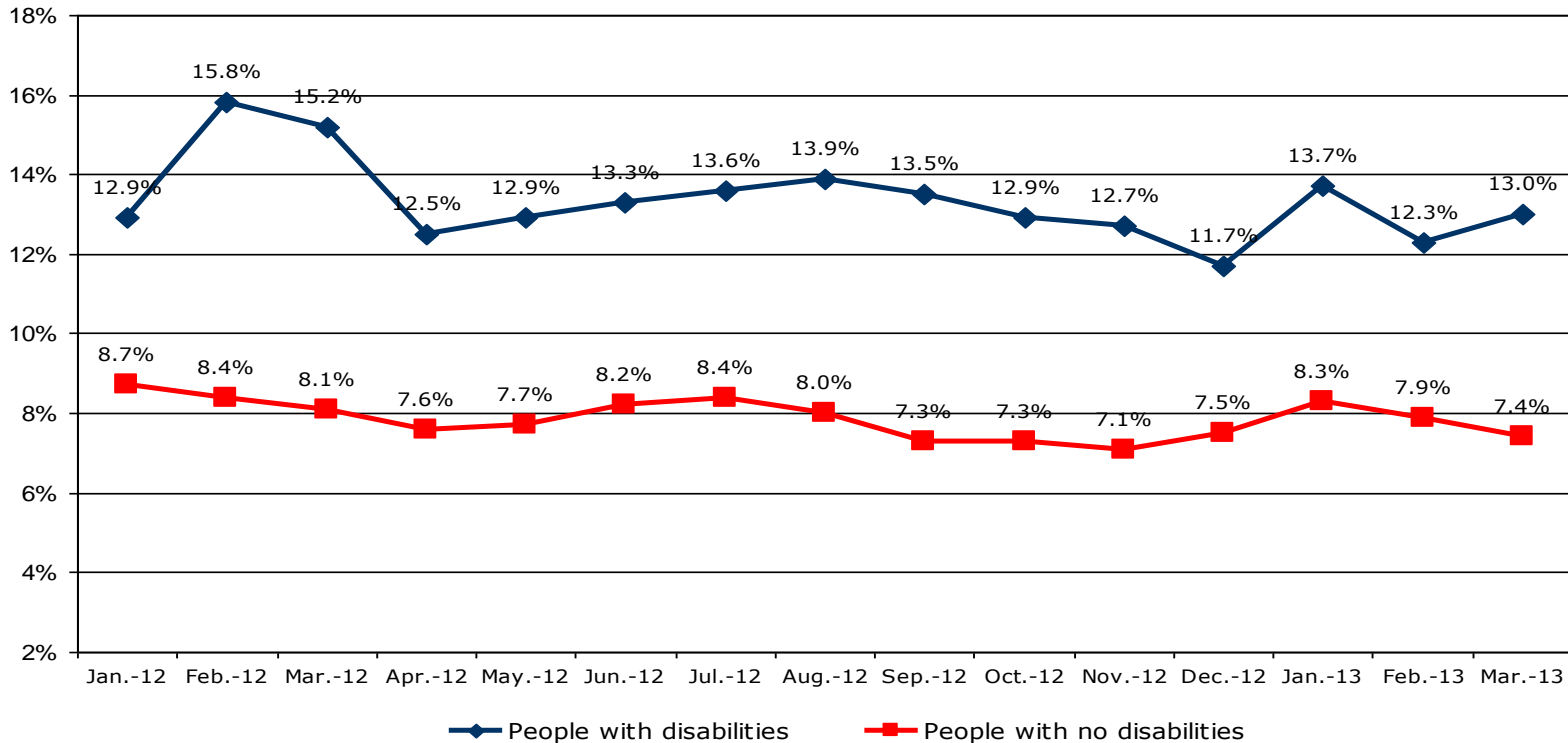
The first-quarter unemployment rate for people with disabilities rose nearly one-half of a percentage point compared to fourth quarter 2012. For first quarter 2013, people with disabilities experienced an unemployment rate approximately 65 percent higher than people with no disabilities.

Source: Allsup analysis based on U.S. Bureau of Labor Statistics data; not seasonally adjusted and includes those 16 and older.

Allsup Disability Study: Income at Risk

The monthly unemployment rate for people with disabilities fluctuated during the first quarter of 2013.

15-month unemployment rates



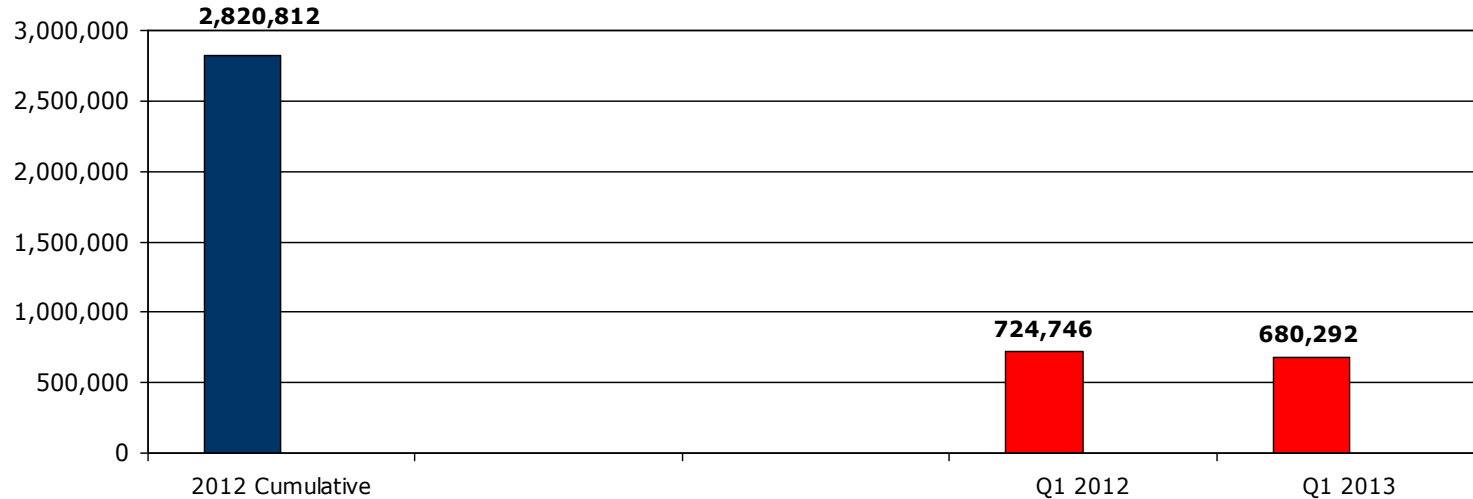
After a steady decline in the latter part of 2012, the unemployment rate for people with disabilities jumped in January 2013, fluctuating again in February and March.

Source: Allsup analysis based on U.S. Bureau of Labor Statistics data; not seasonally adjusted and includes those 16 and older.

Allsup Disability Study: Income at Risk

Social Security Disability Insurance applications were lower compared to a year ago.

SSDI applications



After reaching a four-year low of 638,223 in the fourth quarter of 2012, the number of people applying for Social Security Disability Insurance benefits rose nearly 7 percent in the first quarter of 2013 compared to the previous quarter. However, year over year, applications are down 6 percent when first quarter 2013 is compared with first quarter 2012.

Source: Allsup analysis based on Social Security Administration data.

Background information

About Allsup:

Allsup is a nationwide provider of Social Security disability, veterans disability appeal, Medicare and Medicare Secondary Payer compliance services for individuals, employers and insurance carriers. Founded in 1984, Allsup employs more than 800 professionals who deliver specialized services supporting people with disabilities and seniors so they may lead lives that are as financially secure and as healthy as possible. The company is based in Belleville, Ill., near St. Louis. For more information, go to <http://www.Allsup.com> or visit Allsup on Facebook at <http://www.facebook.com/Allsupinc>.

Allsup Disability Study:

Allsup has been conducting the quarterly "Allsup Disability Study: Income at Risk" since 2009.

First quarter 2013 report: <http://www.allsup.com/Portals/4/allsup-study-income-at-risk-q1-13.pdf>.

Archive: <http://www.allsup.com/about-us/news-room/income-at-risk-report-archive.aspx>

Source materials:

U.S. Bureau of Labor Statistics, http://www.bls.gov/schedule/archives/empsit_nr.htm#2013

Social Security Administration, <http://www.ssa.gov/OACT/STATS/dibStat.html>

Allsup contacts:

Rebecca Ray, (800) 854-1418 ext. 65065, r.ray@allsupinc.com

Mary Jung, (773) 429-0940, mtjung@msn.com