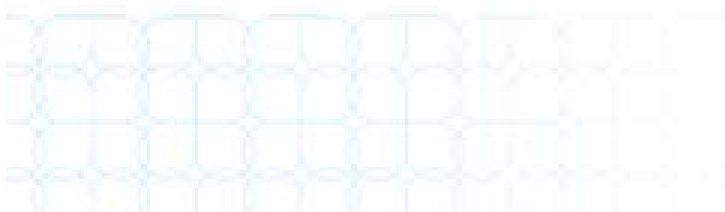


Allsup Disability Study: Income at Risk

Examining income risk factors
for people with disabilities

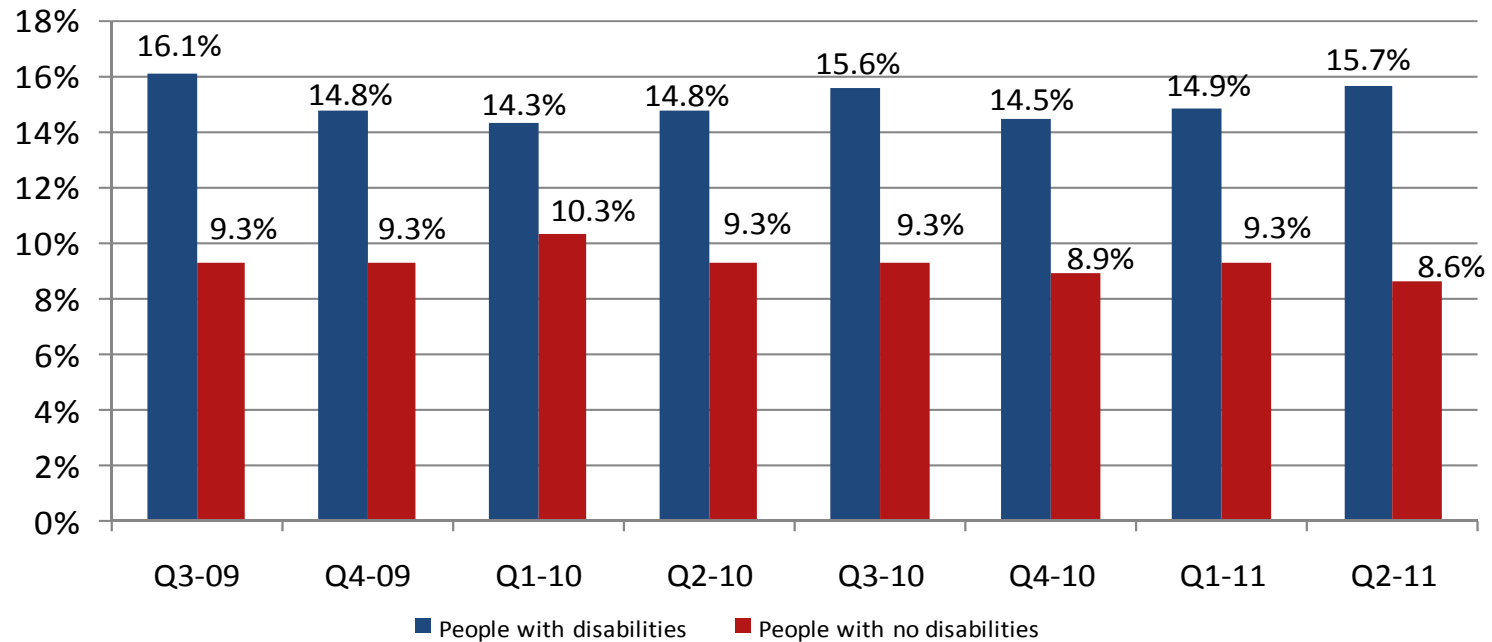
2011 Second Quarter Review
July 2011



Allsup Disability Study: Income at Risk

The unemployment rate for people with disabilities jumped in the second quarter and continues to be significantly higher than for those with no disabilities.

Quarterly unemployment rates



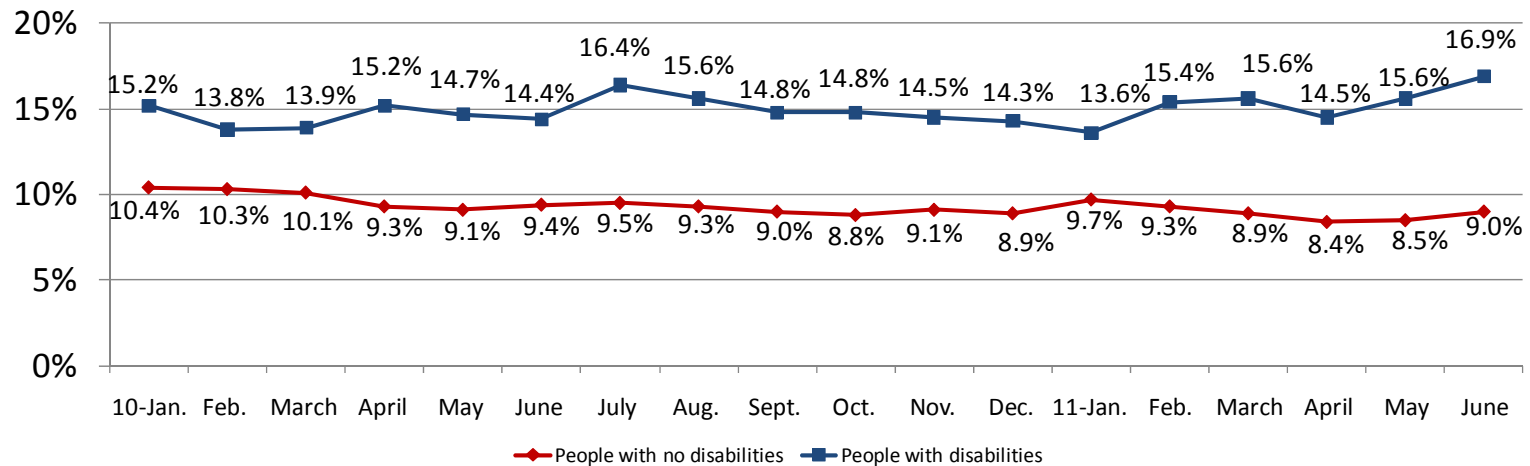
During the second quarter 2011, the unemployment rate for people with disabilities reached its highest quarterly rate in nearly two years. For the second quarter 2011, people with disabilities experienced an unemployment rate more than 80 percent higher than people with no disabilities.

Source: Allsup analysis based on U.S. Bureau of Labor Statistics data; not seasonally adjusted and includes those 16 and older.

Allsup Disability Study: Income at Risk

The unemployment rate for people with disabilities reached a record level in June.

18-month unemployment rates



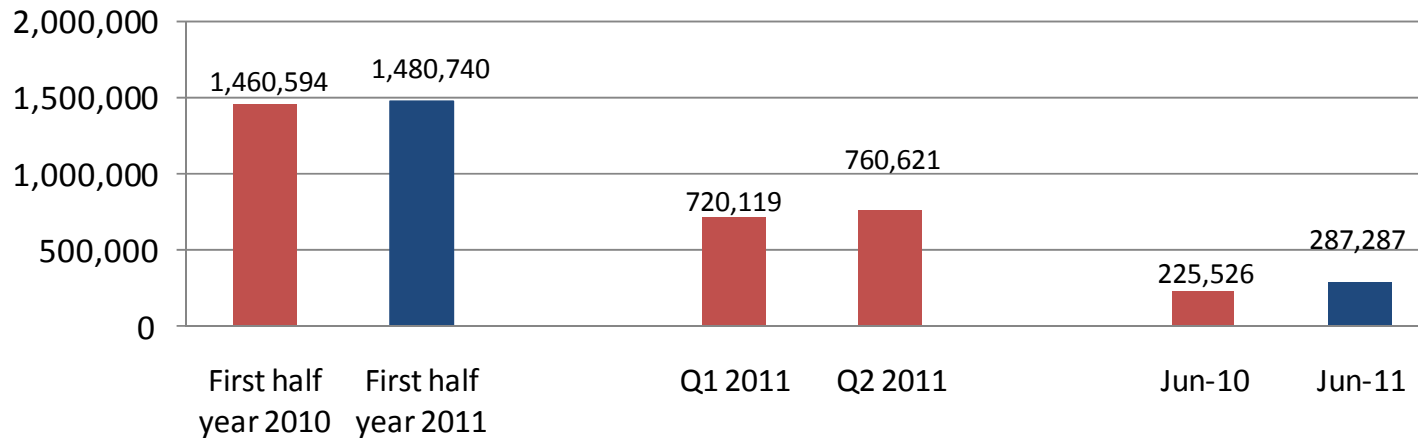
Since the Bureau of Labor Statistics began tracking unemployment rates for people with disabilities in 2008, the unemployment rate for people with disabilities reached its highest rate of [16.9 percent in August 2009](#). In June 2011 – nearly two years later – the unemployment rate again tied the record. Also during the second quarter, the unemployment rate gap between people with and without disabilities widened. People with disabilities consistently have a higher unemployment rate and greater volatility in joblessness than those without disabilities.

Source: Allsup analysis based on U.S. Bureau of Labor Statistics data; not seasonally adjusted and includes those 16 and older.

Allsup Disability Study: Income at Risk

Social Security Disability Insurance applications for the second quarter 2011 increased nearly 6 percent compared to the first quarter 2011.

SSDI applications



The number of people applying for Social Security Disability Insurance benefits increased nearly 6 percent from the first quarter to the second quarter of 2011. Contributing significantly to this was a 27 percent increase in applications for the month of June 2011 compared to June 2010. Specifically, the number of applicants rose more than 60,000, from 225,526 in June 2010 to 287,287 in June 2011.

For the first six months of 2011, SSDI applications are more than 1 percent higher than for the first six months of 2010.

Source: Allsup analysis based on Social Security Administration data.

Allsup Disability Study: Income at Risk

Background information

About Allsup:

Allsup is a nationwide provider of Social Security disability, Medicare and Medicare Secondary Payer compliance services for individuals, employers and insurance carriers. Founded in 1984, Allsup employs nearly 800 professionals who deliver specialized services supporting people with disabilities and seniors so they may lead lives that are as financially secure and as healthy as possible. The company is based in Belleville, Ill., near St. Louis. For more information, visit www.Allsup.com.

Allsup Disability Study:

Allsup has been conducting the quarterly "Allsup Disability Study: Income at Risk" since 2009.

Second quarter 2011 report: <http://www.allsup.com/Portals/4/allsup-study-income-at-risk-q2-11.pdf>

Archive: <http://www.allsup.com/about-us/news-room/income-at-risk-report-archive.aspx>

Source materials:

U.S. Bureau of Labor Statistics, http://www.bls.gov/schedule/archives/empsit_nr.htm#2011

Social Security Administration, <http://www.ssa.gov/OACT/STATS/dibStat.html>

Allsup contacts:

Rebecca Ray, (800) 854-1418 ext. 65065, r.ray@allsupinc.com

Mary Jung, (773) 429-0940, mtjung@msn.com