

Allsup Disability Study: Income at Risk

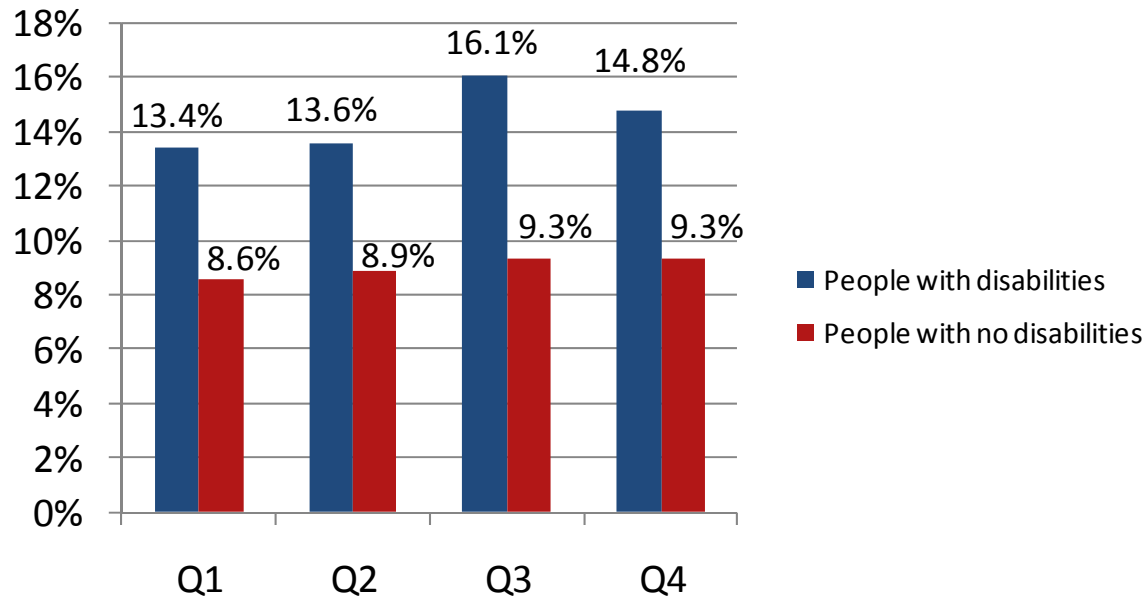
Examining income risk factors
for people with disabilities

2009 Fourth Quarter and Full Year Review
January 2010

Allsup Disability Study: Income at Risk

The unemployment rate for people with disabilities is significantly higher than for those with no disabilities.

2009 quarterly unemployment rates



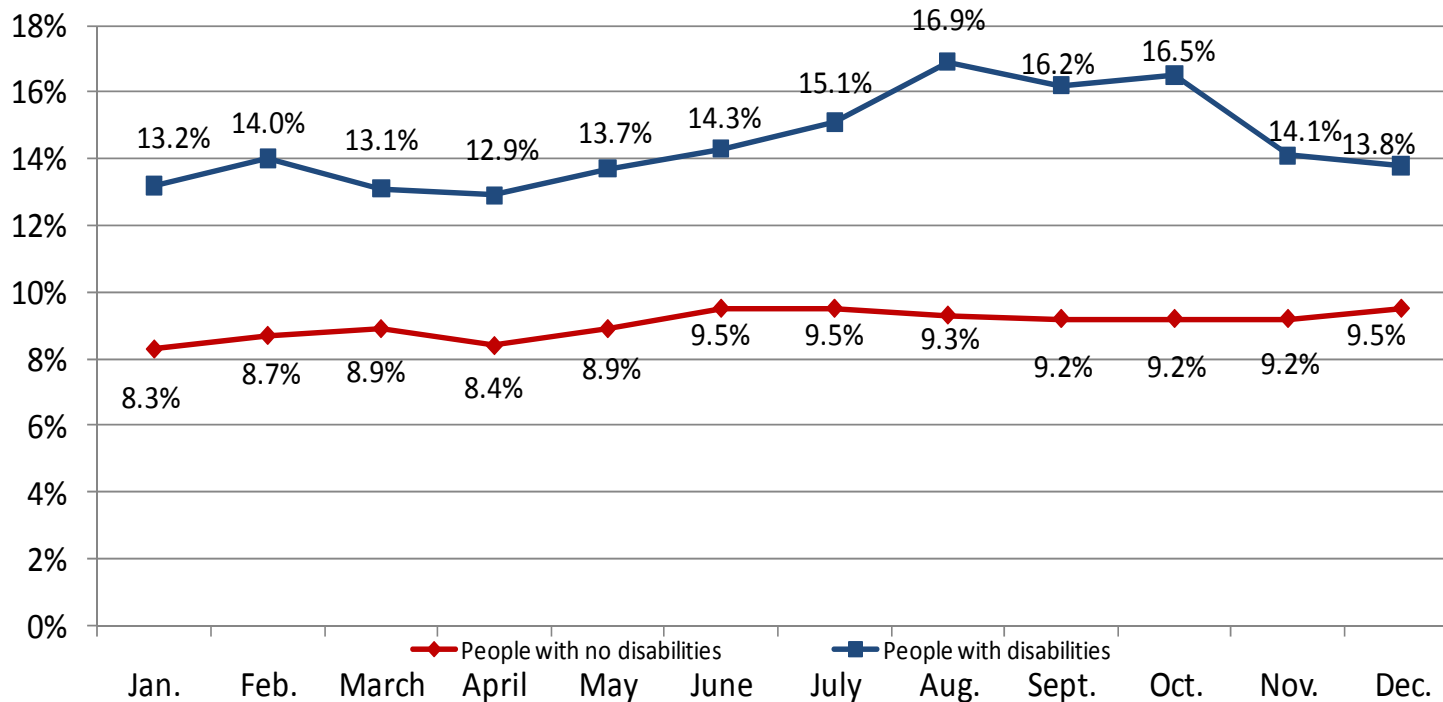
Unemployment rates for people with disabilities remained high throughout 2009. In the third quarter, the unemployment rate for people with disabilities reached the highest recorded since the Bureau of Labor Statistics began releasing this data in 2008. Overall in 2009, people with disabilities experienced an unemployment rate 60 percent higher than people with no disabilities.

Source: Allsup analysis based on Bureau of Labor Statistics data; not seasonally adjusted and includes those 16 and older.

Allsup Disability Study: Income at Risk

The unemployment rate for people with disabilities is significantly higher than for those with no disabilities.

2009 monthly unemployment rates



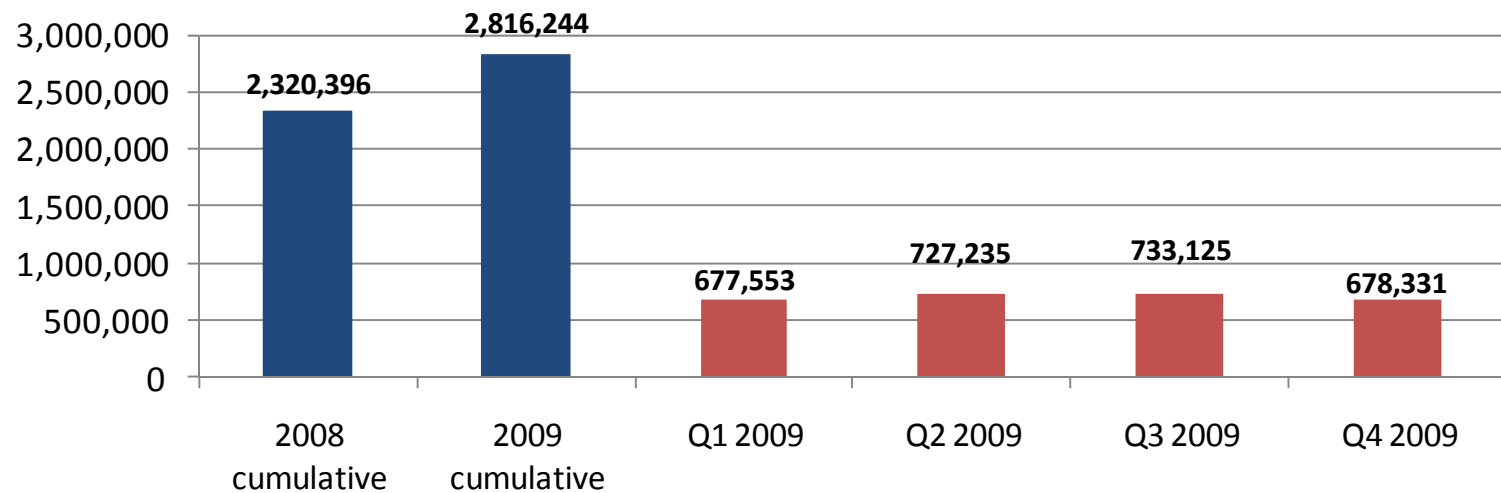
After widening significantly during the third quarter, the gap in unemployment rates between people with and without disabilities narrowed late in the year. However, people with disabilities consistently have higher rates of unemployment.

Source: Allsup analysis based on Bureau of Labor Statistics data; not seasonally adjusted and includes those 16 and older.

Allsup Disability Study: Income at Risk

Social Security Disability Insurance applications increased 21 percent 2008 to 2009

SSDI applications

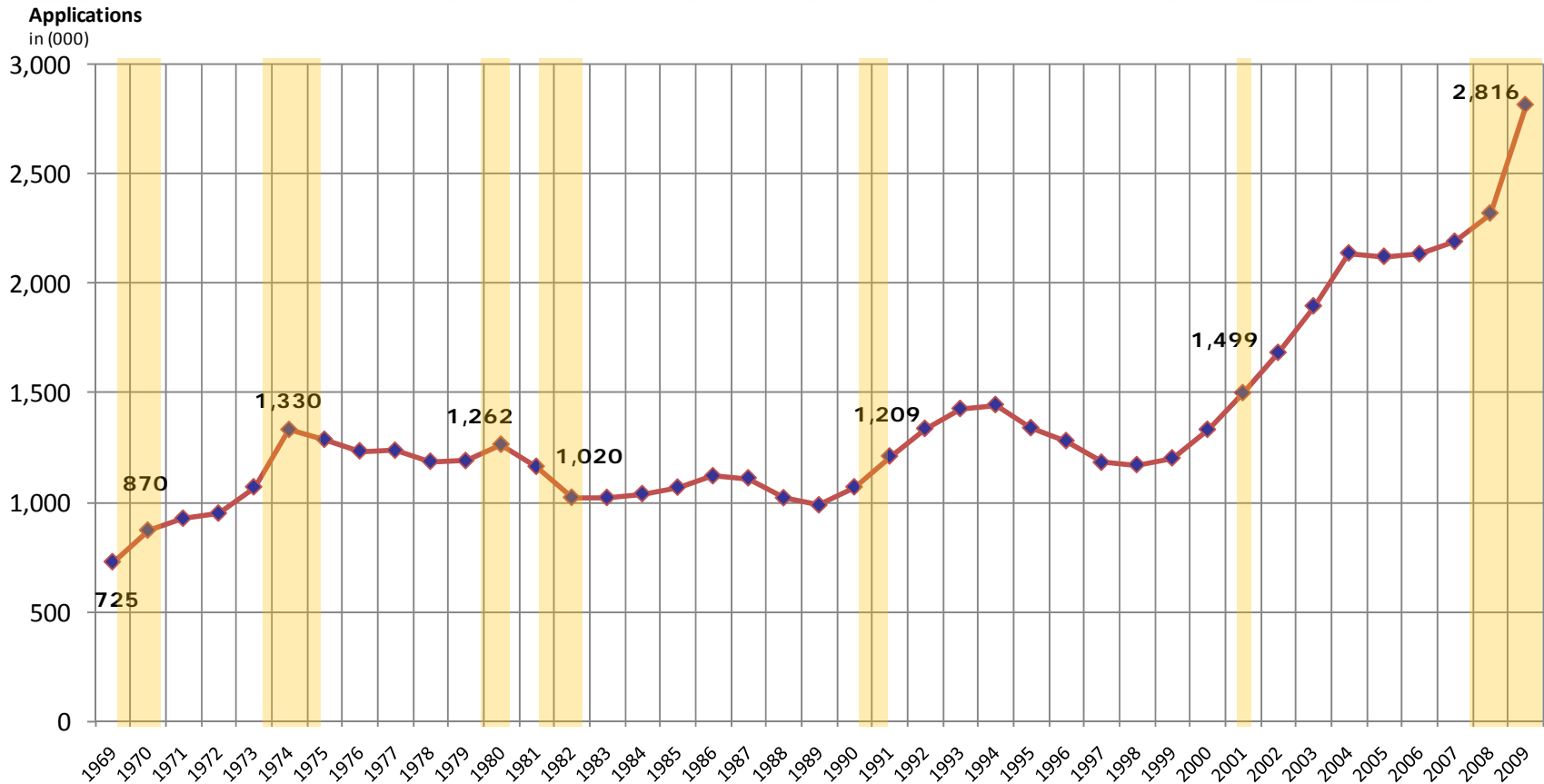


The number of people applying for Social Security Disability Insurance (SSDI) benefits climbed by 21.4 percent from 2008 to 2009. This represents nearly 500,000 additional applications from 2008 to 2009; the highest annual increase ever recorded.

Source: Allsup analysis based on Social Security Administration data.

Recessions and Rise in SSDI Applications 1969-2009

SSDI applications increase during recessions



More than 2.8 million people applied for SSDI in 2009, the highest number of applicants in any year. The level of SSDI applications has grown with each recession, except for the early 1980s. Seven recessions are documented for this period (shaded in yellow):

Dec. 1969-Nov. 1970
Nov. 1973-March 1975

Jan. 1980-July 1980
July 1981-Nov. 1982

July 1990-March 1991
March 2001-Nov. 2001

Dec. 2007-present (*as of Jan. 2010, the NBER has not officially announced the end of this recession*)

Source: Allsup analysis based on Social Security Administration and National Bureau of Economic Research data.

Allsup Disability Study: Income at Risk

Background information

About Allsup:

Allsup is a nationwide provider of Social Security disability, Medicare and workers' compensation services for individuals, employers and insurance carriers. Founded in 1984, Allsup employs more than 600 professionals who deliver specialized services supporting people with disabilities and seniors so they may lead lives that are as financially secure and as healthy as possible. The company is based in Belleville, Ill., near St. Louis. For more information, visit www.Allsup.com.

Allsup Disability Study:

Fourth quarter 2009: <http://www.allsup.com/Portals/4/allsup-study-income-at-risk-q4-09.pdf>

Third quarter 2009: <http://www.allsup.com/Portals/4/allsup-study-income-at-risk-q3-09.pdf>

Second quarter 2009: <http://www.allsup.com/Portals/4/allsup-study-income-at-risk-q2-09.pdf>

First quarter 2009: <http://www.allsup.com/portals/4/allsup-study-of-income-at-risk.pdf>

Source materials:

Bureau of Labor Statistics, <http://www.bls.gov/cps/cpsdisability.htm>

Social Security Administration, <http://www.ssa.gov/OACT/STATS/dibStat.html>;

<http://www.ssa.gov/OACT/STATS/table6c7.html>

National Bureau of Economic Research, <http://www.nber.org/cycles/>

Allsup contacts:

Rebecca Ray, (800) 854-1418 ext 5065, r.ray@allsupinc.com

Mary Jung, (773) 429-0940, mtjung@msn.com