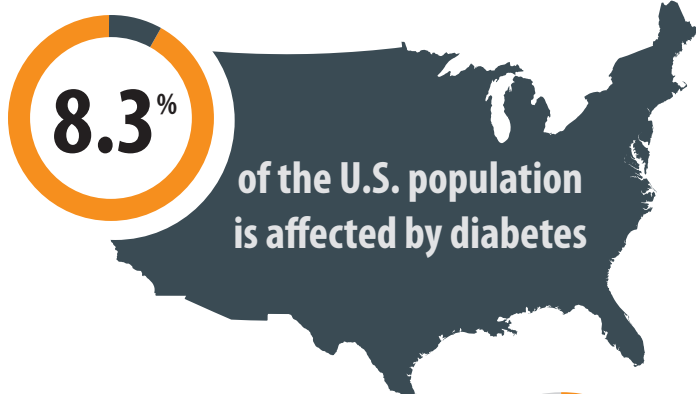


Diabetes and Social Security Disability Insurance (SSDI)

A Quick Look By The Numbers



income that could be lost if diabetes complications make it impossible to continue to work after age 50



Dollars that individuals, families and U.S. society lost due to diabetes related disability, work loss and premature mortality (2007)*

Percentage of individuals with diabetes approved for SSDI benefits at level one**



Medical expenses for people with diabetes are **more than two times** higher than for people without diabetes*



Number of SSDI beneficiaries who have primary diagnosis of endocrine, nutritional or metabolic disease (3.5 percent of all SSDI beneficiaries)***

About SSDI and Allsup

To qualify for SSDI benefits, you must:

- ➔ Have a physical or mental impairment that prevents you from working and the condition is expected to last at least 12 months or result in death
- ➔ Have worked and paid payroll taxes at least five of the last 10 years
- ➔ Have been disabled before reaching full retirement age (65-67)

Number of credits needed to qualify for SSDI benefits



More than 200,000

Number of people Allsup has helped obtain their SSDI and Medicare benefits

Average number of days to get an SSDI hearing in 2012



53

Average age of a person receiving SSDI benefits

Number of SSDI applications expected to be filed in 2013



\$1,919

Average SSDI monthly benefit for individuals with a disability and dependents in 2013

Success rate for customers who complete the SSDI process with Allsup



*National Diabetes Fact Sheet, 2001, Centers for Disease Control and Prevention

** Disability Impairments on Cases Most Frequently Denied by Disability Determination Services and Subsequently Allowed by Administration Law Judges, Social Security Administration Office of the Inspector General, August 2010

*** Annual Statistical Report on the Social Security Disability Insurance Program, 2011



expert.allsup.com